



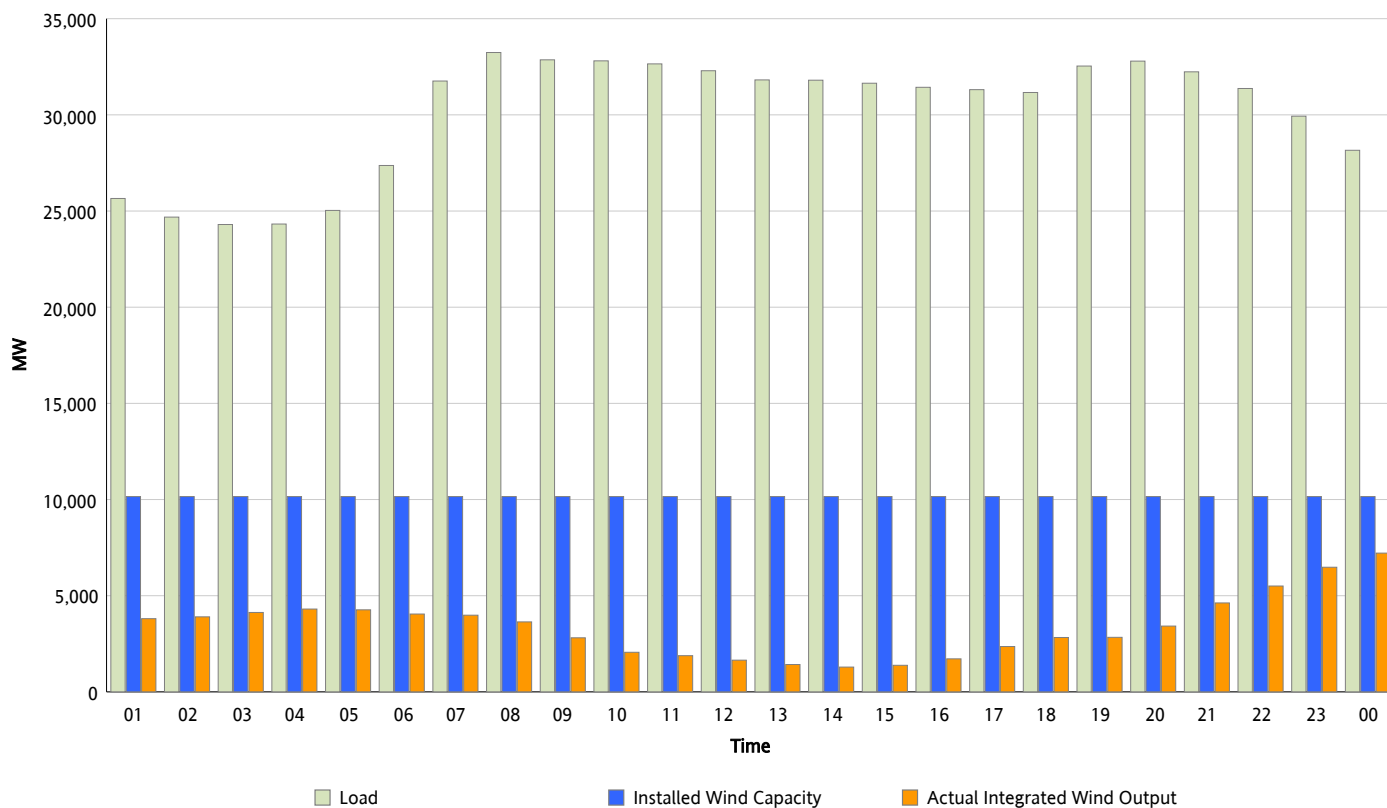
ERCOT Grid Operations

Wind Integration Report : 02/08/2013

Peak Load	33,241 MW
Load Peak Hour (HE)	08
Wind Over Peak	3,638 MW
Wind Record 01/29/13	8,667 MW
Max Wind Value*	7,336 MW
Wind Peak Time	23:30
Wind Integration %	26.06 %

Hourly Average Actual Load vs. Actual Wind Output

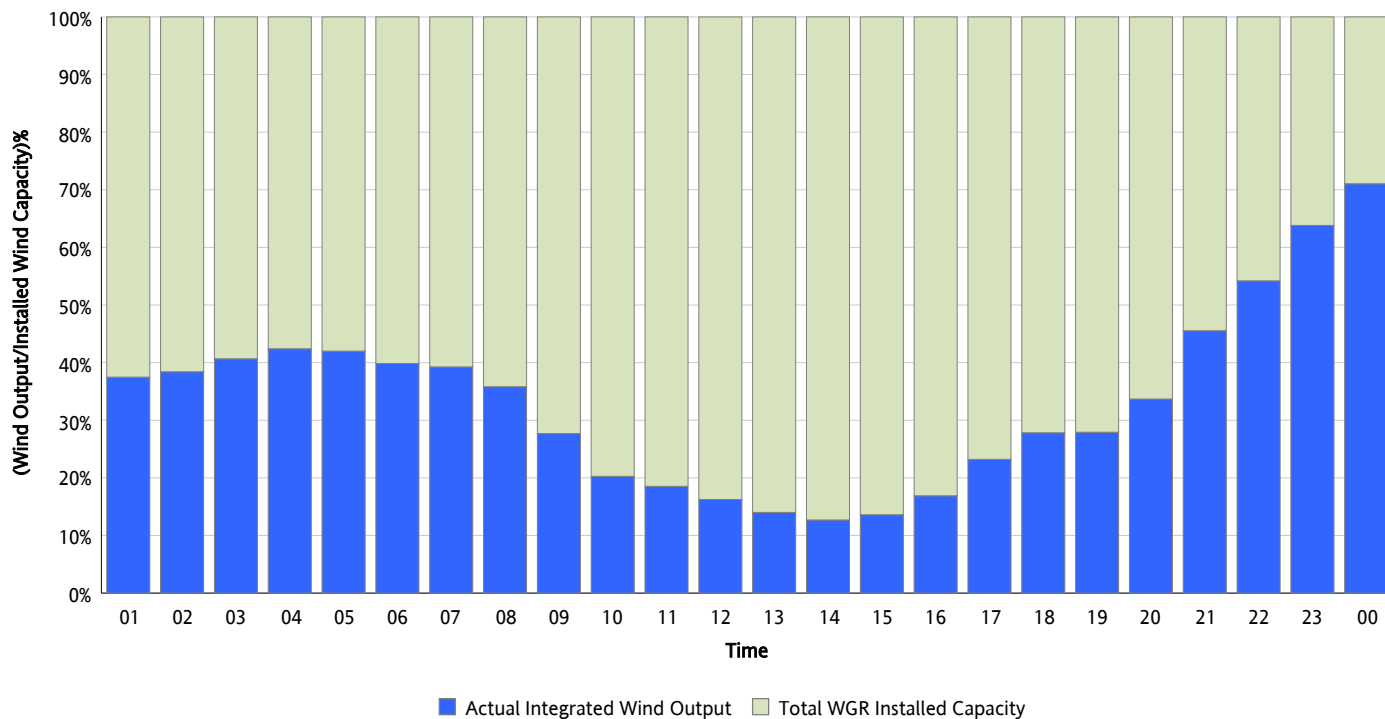
02/08/2013



* Wind Record and Wind Max represent instantaneous values and the rest of the values are integrated over the hour

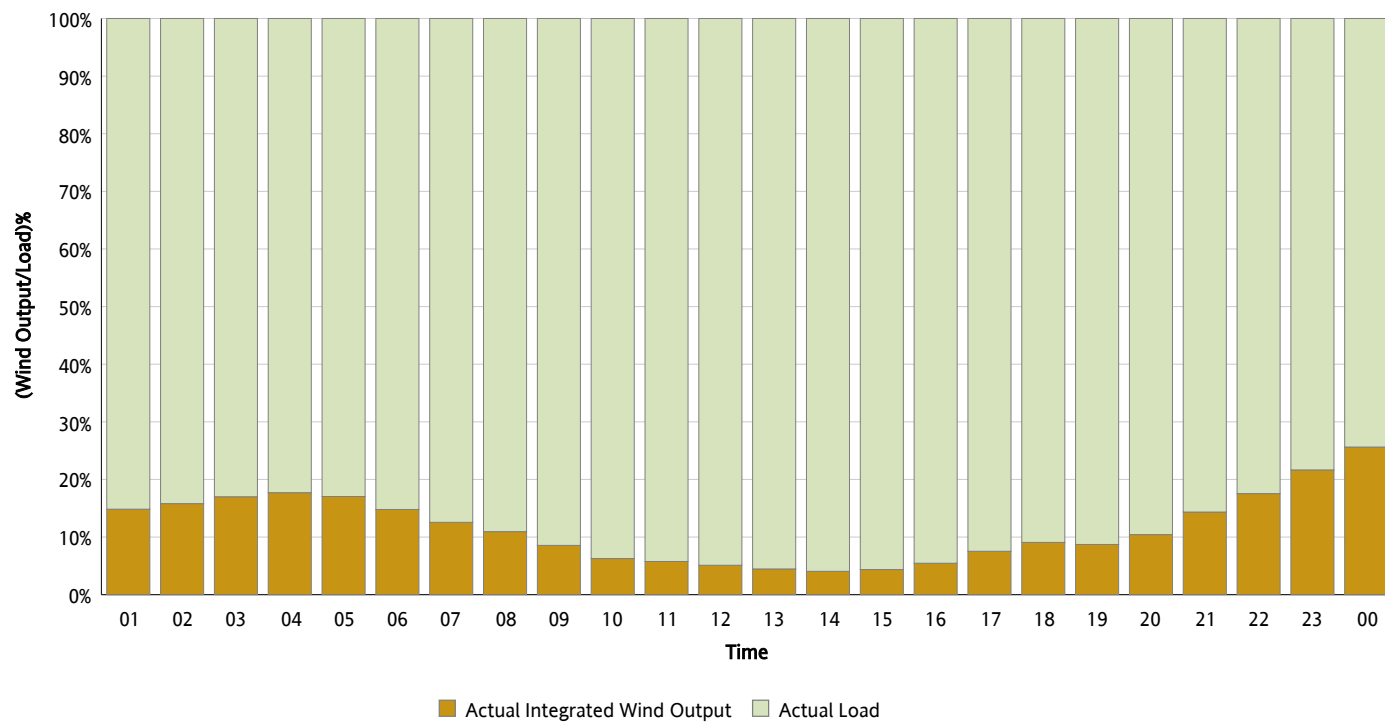
Actual Wind Output as a Percentage of the Total Installed Wind Capacity

02/08/2013



Actual Wind Output as a Percentage of the ERCOT Load

02/08/2013



ERCOT Load vs. Actual Wind Output

02/01/2013 - 02/08/2013

